

Sequencer-Ki

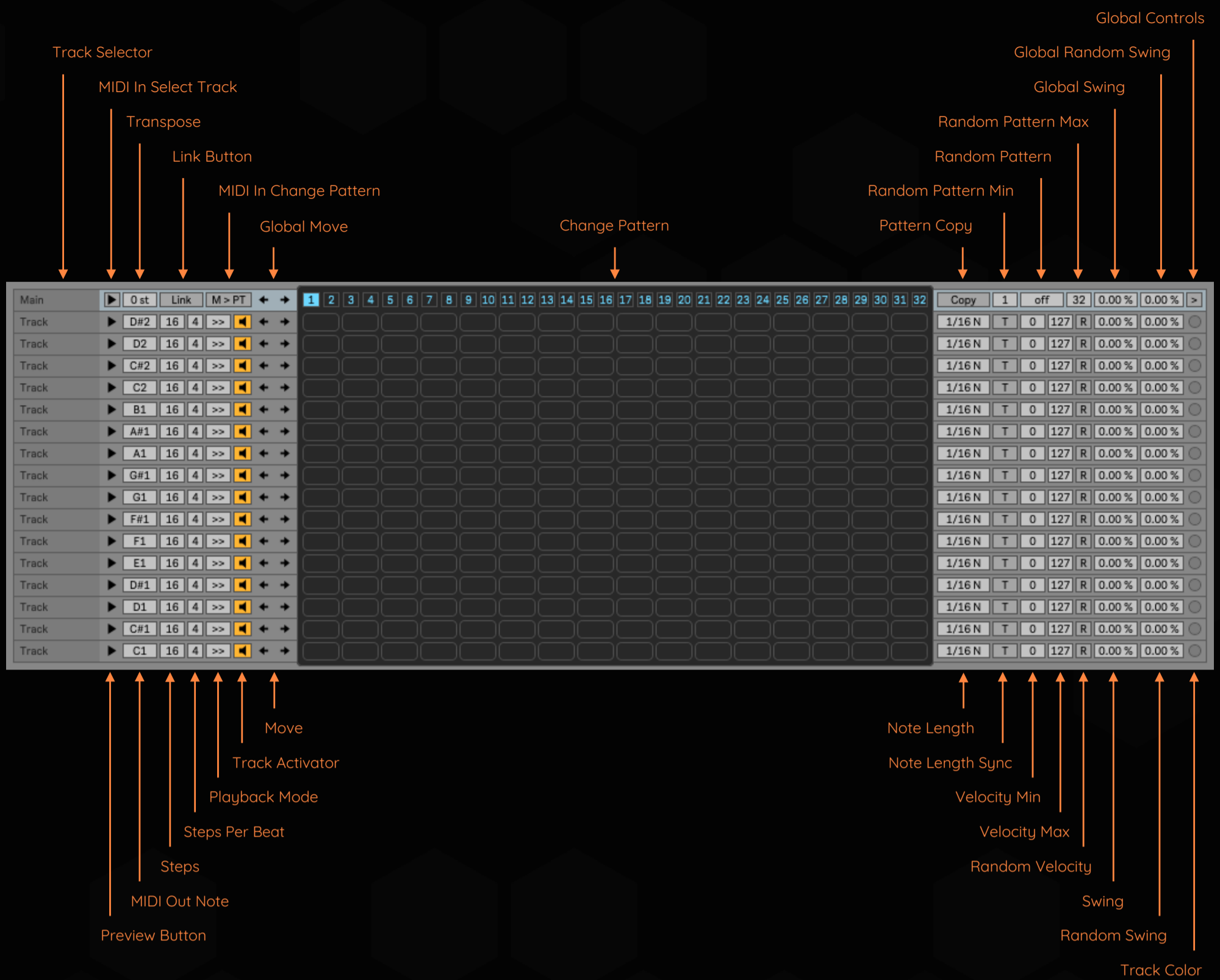
16-track sequencer for Ableton Live



Main features

- 16 tracks with independent probability per step, length and speed, velocity and random velocity, note length beat synced and time-based, random note length, swing and random swing.
- Different playback modes per track: Forward / Backward / Ping-Pong / Ping-Pong Reversed / Random.
- Selectable MIDI output notes and master transpose.
- 16 velocity lanes, one for each track.
- 32 envelope lanes that can be mapped to Ableton Live controls, output MIDI control changes or control the note length and the probability per step of the tracks.
- Randomization of notes and envelope lanes.
- Copy/Paste data between tracks (notes and envelopes). Envelopes can be copied and pasted into any other envelope.
- 32 patterns that can be changed by MIDI input notes or automatic randomization.
- Custom track names and colors.
- Auto-rename tracks based on Ableton Live Drum Rack names.
- Link button to change parameters on all tracks at once.
- Available zoom levels: 100% / 110% / 120% / 130% / 140% / 150% / 160% / 170% / 180% / 190% / 200%.
- The interface colors automatically change to match the color theme of Ableton Live.

MAIN VIEW



Track Selector

Select the track for which to display its envelopes window. Click and drag to quickly switch between tracks.

MIDI In Select Track

Activate this button to select tracks when a MIDI note is received.

Transpose

Transpose the MIDI notes sent by all the tracks.

Link Button

When enabled this button, changes to controls on the first track will change controls on all tracks. This includes:

- Steps
- Steps Per Beat
- Playback Mode
- Note Length Tempo
- Note Length ms
- Note Length Sync
- Random Note Length
- Note Length R
- Velocity Min
- Velocity Max
- Random Velocity
- Swing
- Random Swing
- Lock Grid
- Lock Notes
- Lock Velocity
- Lock Env A
- Lock Env B

MIDI In Change Pattern

When enabled this button the incoming MIDI notes change the selected pattern. MIDI input note range goes from C1 to G3.

Global Move

Move the steps and envelopes of all tracks to left or right.

Change Pattern

Use this control to change pattern.

Pattern Copy

Activate this button to copy the selected pattern to other pattern. To cancel copy press again this button.

Random Pattern Min

Select the first pattern that will define the range of the Random Pattern mode.

Random Pattern

Adjust the random pattern mode (off, 1/4, 1/2, 1/1, 2/1). Patterns played are defined by Random Pattern Min and Random Pattern Max values.

Random Pattern Max

Select the last pattern that will define the range of the Random Pattern mode.

Global Swing

Adjust the swing rate applied to all tracks.

Global Random Swing

Randomize the swing rate applied to all tracks.

Global Controls

Show/hide global controls.

Preview Button

Press this button to send a MIDI note. The note sent is determined by the MIDI Out Note chooser.

MIDI Out Note

Use this chooser to select the MIDI note that will be output by the track.

Steps

Adjust the number of steps in the track.

Steps Per Beat

Select how many steps will be played per beat.

Playback Mode

Use this control to select the playback mode of the track.

- >> = Forward
- << = Backward
- >< = Ping-Pong
- <> = Ping-Pong reversed
- r = Random

Track Activator

Activate this button to hear the track, or deactivate it to mute the track.

Move

Move the steps and envelopes of the track to left or right.

Note Length

Adjust the length of MIDI notes played by the track.

Note Length Sync

Toggles the note length mode between beat synced and time-based.

Velocity Min

Adjust the minimum note velocity sent by the track. Velocity values sent by the velocity envelope will be scaled based on this parameter.

Velocity Max

Adjust the maximum note velocity sent by the track. Velocity values sent by the velocity envelope will be scaled based on this parameter.

Random Velocity

Activate this button to randomize the note velocity sent by the track. The value range is determined by Velocity Min and Velocity Max values.

Swing

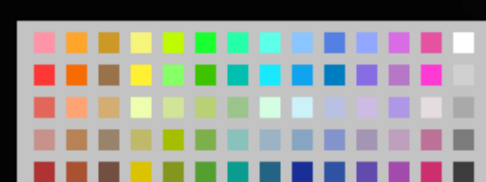
Adjust the swing rate applied to the track.

Random Swing

Randomize the swing rate applied to the track.

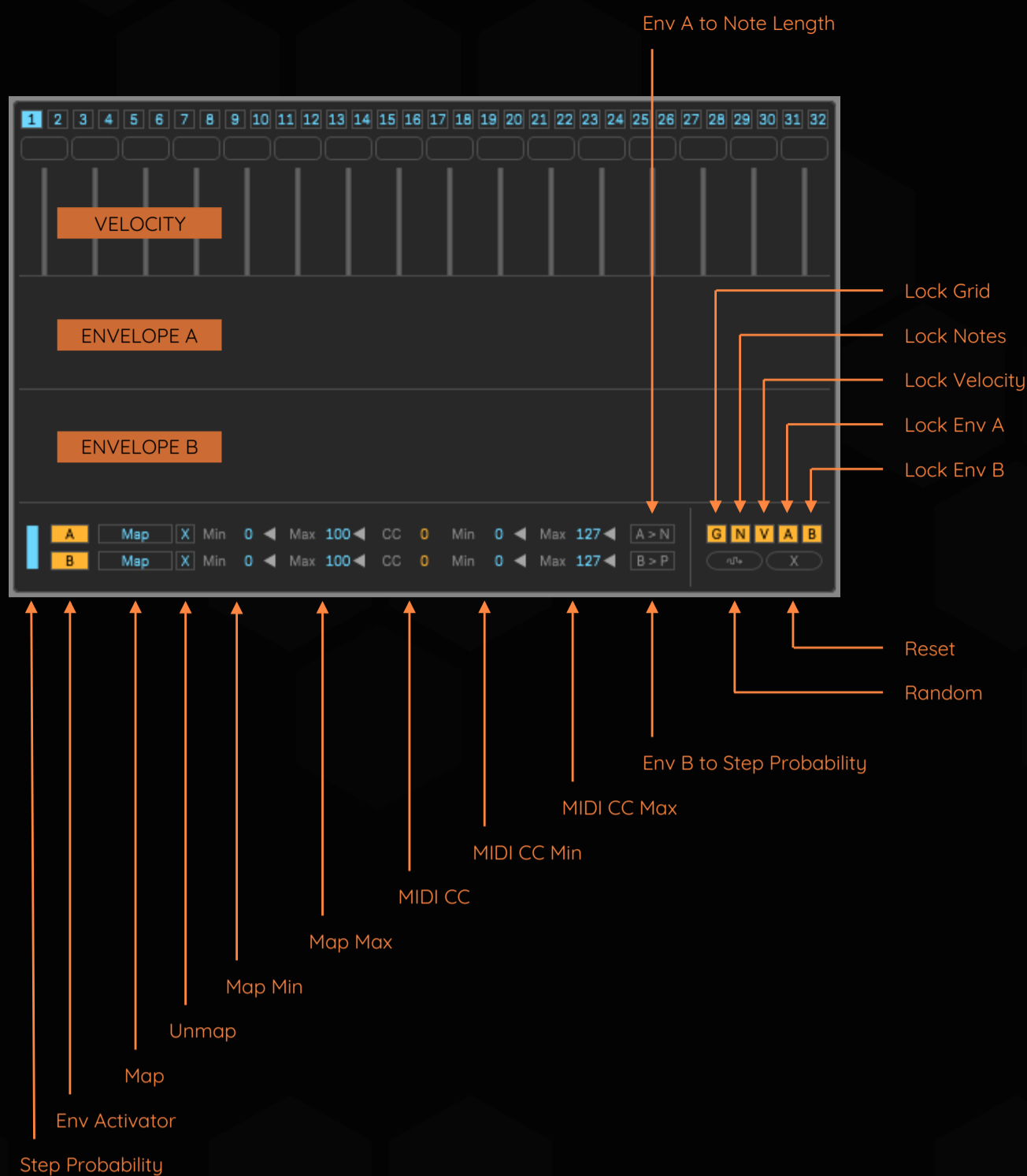
Track Color

Click this button to select the color for the track.



Color picker window

ENVELOPES VIEW



Step Probability

Select the random probability of triggering the steps on this track.

Env Activator

Activate this button to enable envelope, or deactivate it to disable envelope.

Map

When Map is turned on, the next Live parameter clicked on will be selected as a target and the menus will be modified accordingly.

Unmap

Unmaps the currently mapped parameter.

Map Min

Minimum target parameter value in percent. When Min > Max - the range will be inverted.

Map Max

Maximum target parameter value in percent. When Min > Max - the range will be inverted.

MIDI CC

Select the MIDI CC sent by the envelope. A value of 0 disables MIDI CC output.

MIDI CC Min

Adjust the minimum CC value sent by the envelope. The CC values sent by the envelope will be scaled according to this parameter.

MIDI CC Max

Adjust the maximum CC value sent by the envelope. The CC values sent by the envelope will be scaled according to this parameter.

Env A to Note Length

Activating this button causes Envelope A to control the note length of the track. Values 0 sent by the envelope lane will be ignored.

Env B to Step Probability

Activating this button causes Envelope B to control the probability of each step of being triggered.

Lock Grid

When disabled this button the grid (steps and steps per beat) will not be affected by Randomize and Reset buttons.

Lock Notes

When disabled this button the notes will not be affected by Randomize and Reset buttons.

Lock Velocity

When disabled this button the velocity lane will not be affected by Randomize and Reset buttons.

Lock Env A

When disabled this button the envelope A lane will not be affected by Randomize and Reset buttons.

Lock Env B

When disabled this button the envelope B lane will not be affected by Randomize and Reset buttons.

Random

Press this button to randomize the track. Randomized parameters are:

G = Grid (steps and steps per beat)

N = Notes

V = Velocity lane

A = Envelope A

B = Envelope B

Reset

Press this button to reset the track. Reset parameters are:

G = Grid (steps and steps per beat)

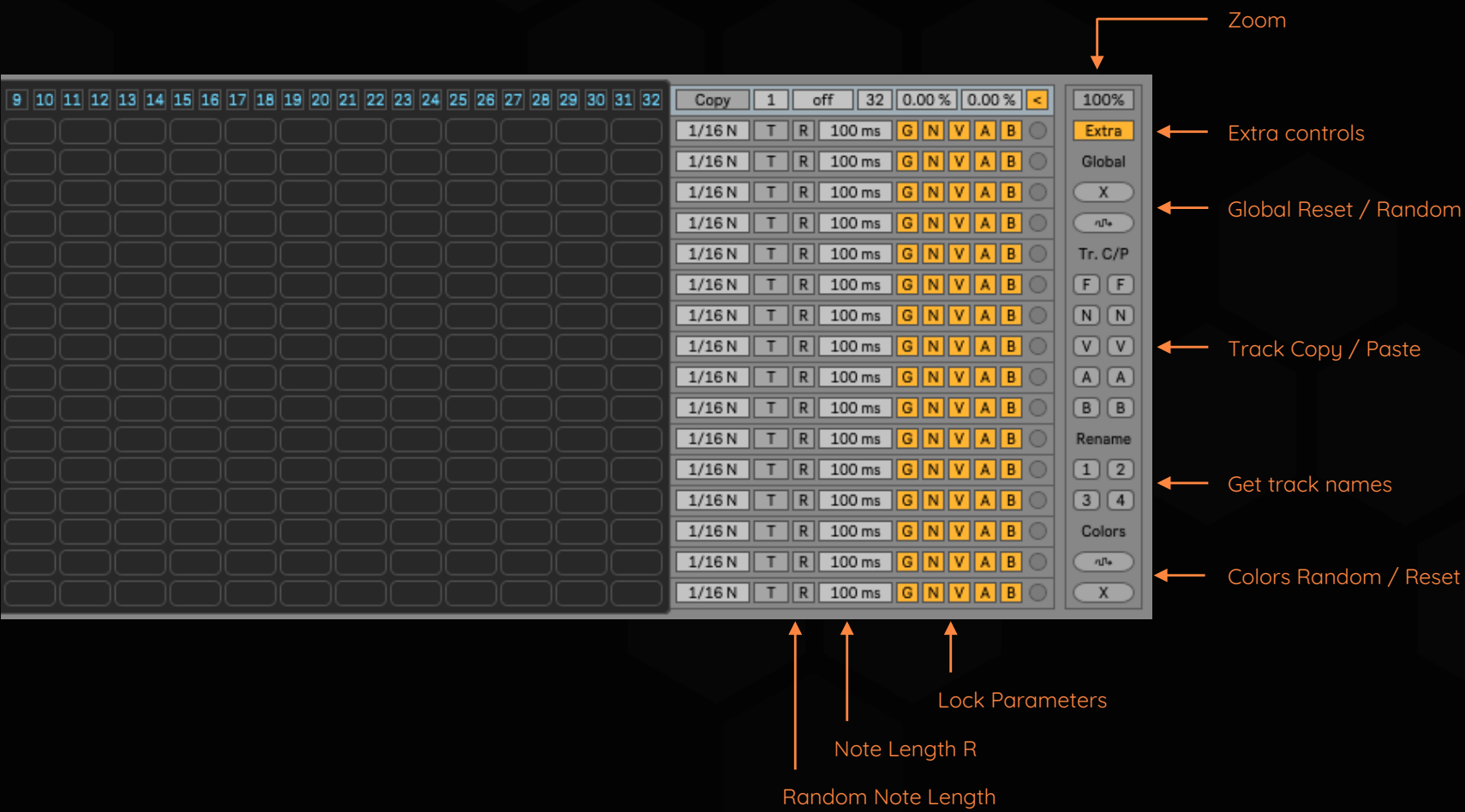
N = Notes

V = Velocity lane

A = Envelope A

B = Envelope B

GLOBAL CONTROLS



Zoom

Change the size of the sequencer window. Available zoom levels:
100% / 110% / 120% / 130% / 140% / 150% / 160% / 170% / 180% / 190% / 200%

Extra controls

Show / Hide controls for Random Note Length and Lock parameters to better see which tracks have locked parameters.

Global Reset / Random

Buttons to reset and randomize all tracks. The affected parameters are:

G = Grid (steps and steps per beat)
N = Notes
V = Velocity lane
A = Envelope A
B = Envelope B

Track Copy / Paste

Buttons to copy / paste data between tracks. The left column copies the data from the selected track, the right column pastes the data into the selected track.

F = Full (Notes, Velocity, Env A and Env B)
N = Notes
V = Velocity
A = Envelope A
B = Envelope B

The Velocity, Env A, and Env B lanes can be pasted into any Velocity, Env A, or Env B lane.

Get track names

Get track names from Drum Rack. Sequencer-Ki must be the first device on the track and the Drum Rack must be the second device on the track.

1 = Get names from C1 to D#2
2 = Get names from E2 to G3
3 = Get names from G#3 to B4
4 = Get names from C5 to D#6

Colors Random / Reset

Buttons to randomize and reset the colors of all tracks.

Random Note Length

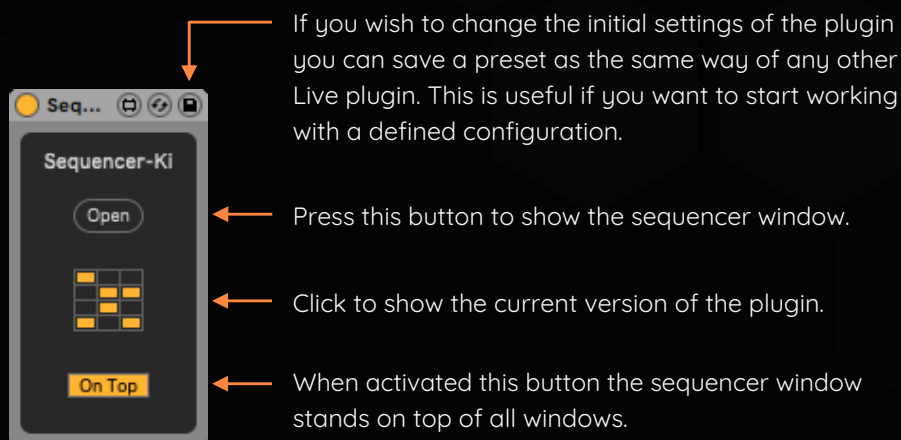
Activate this button to randomize the note length of this track. The value range is determined by Note Length ms and Note Length R. It only works if Note Length Type is set in time-based (ms) mode.

Note Length R

Set the minimum or maximum length of MIDI notes played by this track when Random Note Length is turned on.

Lock Parameters

Replication of the controls explained above in the Envelope View section.



If you wish to change the initial settings of the plugin you can save a preset as the same way of any other Live plugin. This is useful if you want to start working with a defined configuration.

Press this button to show the sequencer window.

Click to show the current version of the plugin.

When activated this button the sequencer window stands on top of all windows.

Saving patterns

Patterns are saved:

- Every time you change the selected pattern using the Change Pattern selector.
- Clicking on the selected pattern number in the Change Pattern selector.

Patterns are not saved:

- When changing patterns by MIDI input notes.
- When changing patterns by the Random Patterns generator.

The issue of not saving patterns is because a performance problem of how Max for Live store presets.

Take this in mind when working with MIDI pattern change and random pattern change, if you stop the transport of Live to make changes to the pattern remember to click on the selected pattern number to store it before you press play again.

Performance issues

Due the nature of Max for Live some elements are not drawn at a optimal speed.

This is not a problem because the audio is not interrupted and the plugin works always in sync with Ableton Live.

You may experience a little draw delay specially when drawing in to the envelope lanes quickly and also when changing patterns very quickly by MIDI input notes.

In some systems drawing in to the envelope lanes when Live transport is stopped is laggy, but drawing when Live transport is playing goes well.

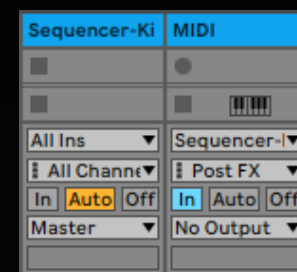
Rename tracks

On Windows press CONTROL + R to rename the selected track.
On Mac press CONTROL + CMD + R to rename the selected track.

Export sequences

Route MIDI from track to track in Ableton Live to record sequences.

Create a MIDI track in Ableton Live and select the track where Sequencer-Ki is located as MIDI input. Set the input channel to Post FX and the monitoring type to In.



Press record on the created MIDI track to export the note sequences and automation of MIDI control changes generated by Sequencer-Ki.

Export envelopes that are mapped to Ableton Live controls

Envelope lanes can be used to map Ableton Live controls and send MIDI control changes at the same time.

If you want to export envelopes that control Ableton Live controls, you can activate the MIDI control changes and these will be recorded in the Ableton Live automation.

Then you can copy the exported automation to the Ableton Live automation lane you want.

Swing and Random Swing

The Sequencer-Ki swing is not the typical swing that we are used to. It's a different approach to randomizing note triggering.

The Swing control slightly delays triggering of notes. It should be used in conjunction with Random Swing to achieve note triggering similar to that of live performances.

To get the best results follow this example:

Set the Swing controls on all tracks to 50% and use the Ableton Live Track Delay to adjust the sequencer to the project tempo. Turn on the Ableton Live metronome and set the Track Delay value negatively until you notice it's in sync.

Set the Swing value of some tracks between 30% and 40% and increase the Random Swing between 20% and 30%. You will notice a slight delay in the triggering of notes that will make the sequence more organic.

Also note that Global Swing and Global Random Swing affects all tracks equally. This is more useful for use with melodic sequences than with percussion sequences.