

Notes-Ki Reference Manual v1.0

for Windows and Mac

Reference Manual by killihu

killihu

Plugins, skins and other resources for computer-based audio production
Contact Support: www.killihu.vstskins.com/contact

Copyright 2024 killihu. All rights reserved.

The content of this manual is furnished for informational use only, is subject to change without notice, and should not be construed as a commitment by killihu. Every effort has been made to ensure that the information in this manual is accurate. killihu assumes no responsibility or liability for any errors or inaccuracies that may appear in this book.

Ableton is a trademark of Ableton AG. Max for Live is a product developed by Ableton AG in cooperation with Cycling '74. Mac is a trademark of Apple Inc, registered in the U.S. and other countries. Windows is a registered trademark of Microsoft Corporation in the United States and other countries.

killihu is not a partner of Ableton AG or Cycling'74.

This book has been inspired by the Ableton Live Reference Manual, with the aim of making it easier for Ableton Live users to read.

Contents

Main information

1.1	Plugin Overview	4
1.2	System Requirements	5
1.3	Installation Instructions	5
1.4	Limitations	5
1.5	Additional installation on Mac	6

Controls

2.1	Main Controls	7
2.2	Note Type	7
2.3	Image Location	8
2.4	Image Insert/Remove	8
2.5	Note Color	8

Notes-Ki Browser

3.1	Rack Controls	9
3.2	Floating Window Controls	9

Main information

1.1 Plugin Overview

Notes-Ki allows you to insert text and image notes into the effects chain of tracks. It features a browser that allows you to scroll through the different notes in the project, making the track where they are located visible and putting the focus on the notes.

There are 3 types of notes that can be used: Text, Checklist and Image. So you can use them as simple information notes, reminders of things to do or screenshots of your external hardware.

When you use Image notes and click on the image, it opens with the default image viewer of the operating system.

In Live 12, the image can be automatically copied to the project folder. So the project can be shared with other users and the correct path to the image will be maintained.

It is possible to set the color of each note and it will be displayed in the browser as well. So you can create a color system based on the importance or purpose of each note.

Note that when selecting notes using the browser, they will not be displayed if they are inside a collapsed effects rack. And the order in which notes are displayed in the browser is determined by the track position and the time at which the note was created. So notes within a track are not displayed in the order they are in the track, but rather by the time at which they were created.

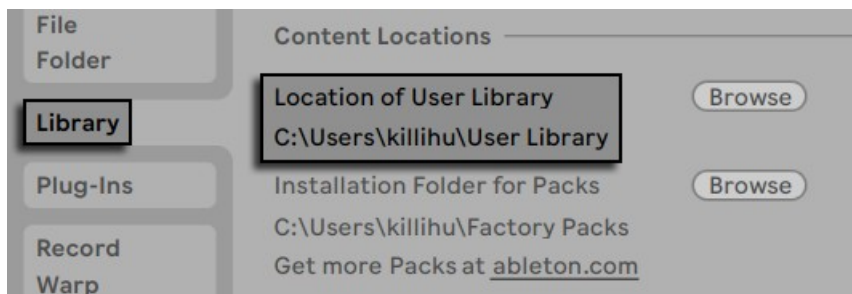
1.2 System Requirements

- Live Version: 10 / 11 / 12 with Max for Live
- Operating System: Windows, Mac

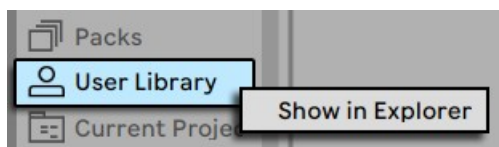
1.3 Installation Instructions

Unzip the ZIP file and copy the plugin amxd files to your User Library folder. There are two ways to find where your User Library is located:

Go to Preferences – Library – Location of User Library



Or [right-click] on the User Library in the Browser – Show in Explorer



1.4 Limitations

The feature to save images inside the project folder only works in Live 12.

1.5 Additional installation on Mac

The device uses an external Max component to copy images to the project folder. This feature only works on Live 12. If you're using Live 10 or Live 11 you can skip this step.

Copy the file shell.mxo to the folder:

/users/shared/Max 8/Library/

Open the Terminal utility and type:

xattr -d -r com.apple.quarantine "/users/shared/Max 8/Library/"

It is also possible to use this folder: /users/<your user>/Documents/Max 8/Library/

In the Terminal utility write the same but changing the folder path:

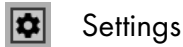
xattr -d -r com.apple.quarantine "/users/<your user>/Documents/Max 8/Library/"

More information about the use of external components of Max and Mac security in the following link.

<https://cycling74.com/articles/using-unsigned-max-externals-on-mac-os-10-15-catalina>

Controls

2.1 Main Controls



Displays the options for selecting the note type.

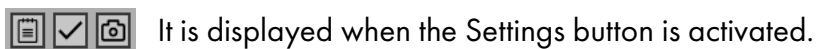


When this switch is on, the note will be displayed in the Notes-Ki Browser list.



Click on this control and drag up and down to resize the device.

2.2 Note Type



There are 3 different types of notes.

Text note: Plain text note.

Checklist: Displays 8 rows of text along with a checkbox for each.

Image: Allows insertion of an image in jpg, jpeg, or png format. Clicking on the image will display it in the operating system's default image viewer.

2.3 Image Location

 **Def** Only available on Live 12.

Sets the location of the image. In default mode (Def) the path from where the image was inserted is used. In project mode (Proj) the image is copied to a subfolder within the project folder. For project mode to work the project must first be saved.

It is possible to change the size of the device to add text to the note in addition to using an image.

2.4 Image Insert/Remove

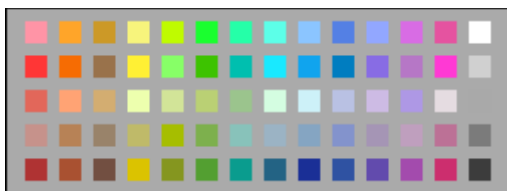
There are two ways to insert an image. By dragging it into the Drag File box, or by using the Insert Image button.

To replace an existing image it is not necessary to remove it first. It can be replaced by drag and drop or by using the Insert Image button.

The Remove Image button removes the image from the device but does not delete it on disk.

2.5 Note Color

At the bottom of the device, above the buttons, a horizontal colorable box is displayed. Clicking it displays a color selection window. The colors of each note will be displayed in the note browser.



Notes-Ki Browser

3.1 Rack Controls

On the device rack is the button to show/hide the floating window. This button can be mapped, allowing you to assign a keyboard key to show and hide the floating window.

An icon is displayed at the bottom of the device rack. Clicking on the icon shows the version of the device. When a new device update is available, a message will be displayed indicating it.

3.2 Floating Window Controls

 Common Controls

The floating window can be moved by clicking on the top bar and dragging, just like any other program window.

At the top right are controls for resizing the window, docking it on top of other windows so it's always visible, and closing it.

 Sync

Each time the floating note browser window is opened it is synchronized with the existing notes in the project. In case you insert or delete Note-Ki instances while the floating window is open, you can use the Sync button to synchronize them again.